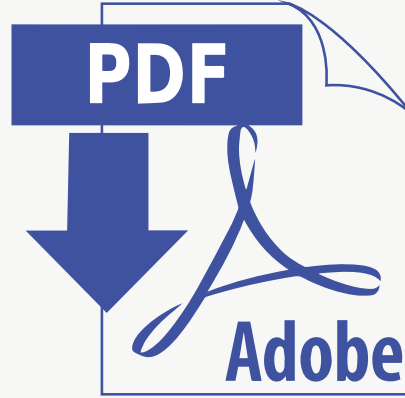


Download and open in Acrobat or
Adobe Reader for optimal viewing.





StudioKnob was founded in 2015 by **Adi Azar**, a graduate of the Shenkar College of Engineering and Design and **Yotam Shifroni**, a graduate of the Holon Institute of Technology. The boutique studio specializes in out of the box **furniture, lighting and pieces for home design.**

The name of the studio was derived from the qualities which a knob adds to an artifact. A knob can be a handle, a button, a tool that adjusts and tunes; it is a **small detail that affects the larger whole.** The artifacts which we create are **designed to add a gentle tone of eclectic elegance to the interior design space.**

YOTAM



ADI

Awards:

- 09.2019 - Intelligence Design Award (IDA), honorable mention, cultural innovation category
- 05.2019 - Gold A`Design Award winner, lighting products and lighting projects category
- 12.2018 - Red Dot, one of 50 young design professionals shortlist
- 10.2017 - Award from The Old Jaffa Development Company: Residency and a two-month exhibition
- 03.2017 - Fresh Paint Fair & Holon Design Museum official choice; Award included procurement of a Layered piece for the museum's collection

Solo Exhibitions:

- 02.2022 - "Very Mature", The Farm Gallery, Holon, Israel
- 05.2018 - "Launch Pad", Wanted Design Manhattan, USA
- 11.2017 - "Both Matters II", Mazal Dagin Gallery, Old Jaffa, Israel
- 03.2017 - "Both Matters I", Fresh Paint 8 art & design fair, Tel Aviv, Israel
- 05.2015 - "Stories In Light & Shadows", D+A Domus Gallery, Israel



BOTH MATTERS

Collaboration with Amir Raveh



מוזיאון העיצוב חולון
Design Museum Holon
متحف التصميم حولون



MARIE AN TOILETTE



L 50 \ W 25 \ H 190 cm

BOTH MATTERS

For pricing & more info



MISSING LEGS

Old chair legs were repurposed into unique light fixtures suspended from the ceiling. The combination of curved wooden legs and transparent glass elements creates a distinct and unconventional shape, departing from traditional lampshade designs and resulting in an intriguing void.



L 70 \ W 70 \ H 120-200 cm

BOTH MATTERS

For pricing & more info



KNOCK KNOCK TABLE



L 90 \ W 90 \ H 31 cm

BOTH MATTERS

For pricing & more info



KNOCK KNOCK TABLE



L 90 \ W 90 \ H 31 cm

BOTH MATTERS

For pricing & more info



OPEN CHEST



L 126 \ W 40 \ H 57 cm

BOTH MATTERS

For pricing & more info



OPEN CHEST




L 126 \ W 40 \ H 57 cm

BOTH MATTERS

For pricing & more info



OPEN A WINDOW: JAFFA

 This piece was added to the collection of the Holon Museum of Design

An image of a Jaffa landscape created from layers of acrylic glass. The image is backlit and placed within an old window frame. The connection between the image and the frame creates a flowing dialogue between new and old materials and reflects the organic connection between digital crafts and hand-made crafts used to create the piece.



L 55 \ W 10 \ H 58 cm

BOTH MATTERS

For pricing & more info



OPEN A WINDOW: KIBBUTZ

An image of scene in a kibbutz, taken from a typical Israeli childhood, created from layers of acrylic glass and backlit using LED lighting. The frame was taken from a dismantled window and the meeting of the lit image with the frame is simple, and the solution of the switch which is found on the original handle of the window, completes the composition.



L 160 \ W 10 \ H 50 cm

BOTH MATTERS

For pricing & more info



A'DESIGN AWARD
& COMPETITION



AWARD WINNING DESIGN
GOLD A' DESIGN AWARD

2019

[Click here for an interview](#)

CLICK LIGHT

Interactive Light Fixture
designed for Aqua Creations



CLICK LIGHT

- PATENT PENDING -

“Click” is the sound of substance caressing substance and light that flows between them. Click is an invitation from us to you to touch, change, INTERACT.



red dot
2019 shortlists



Each shelf unit: L 80 \ W 20 \ H 14 cm

Rope units length: 70, 100, and 135 cm

CLICK LIGHT

CLICK LIGHT

In most cases, the designer is the one getting all the fun from creating a piece, and from testing different variations. With Click Light, the creative game is moved to the customer.



Each shelf unit: L 80 \ W 20 \ H 14 cm
Rope units length: 70, 100, and 135 cm

CLICK LIGHT

For pricing & more info



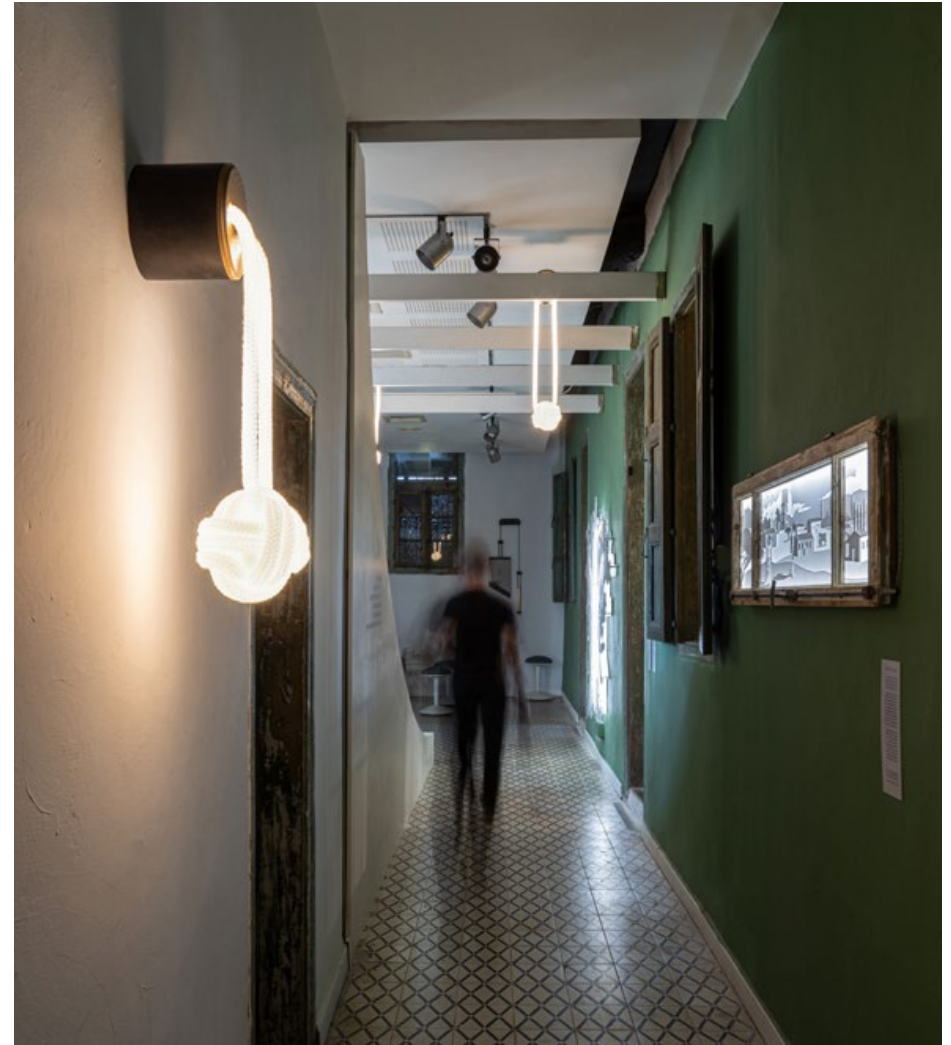
one CLICK
endless variations



CLICK LIGHT

MONKEY FIST

Marine knot enlarged to huge proportions hanging from the ceiling or the wall. The simple looking rope is winding in many layers to create a symmetrical and soft shape that comes to life at a touch of a switch.



L 16 \ W 16 \ H 40-70 cm

For pricing & more info



COIL COLLECTION

5 meter of
lighting rope



COIL COLLECTION

HANGING AROUND

Lucy and Lital AKA “HAME`ATZVOT” asked us to create a custom lighting fixture for a narrow balcony. We worked closely with them to incorporate black mirrors into the design, resulting in a striking and functional solution that enhanced the space. The result was a beautiful and tailored fixture that exceeded their expectations.



L 265 \ W 15 \ H 100 cm

For pricing & more info



COIL COLLECTION



COIL COLLECTION

LOOPING AROUND

A fashion designer contacted us, seeking our expertise to install a rope lamp around a gorgeous steel mirror in her living room. We are delighted to have the chance to collaborate and bring her creative vision to fruition, crafting a warm and inviting ambiance for her living space.



L 105 \ W 7 \ H 120 cm

For pricing & more info



COIL COLLECTION



LAYERED

Decorative Lighting Collection

The LAYERED Technique

A series of decorative multi-layered light fixtures which add an enchanting experience to the interior design.

Since the launch of the “Layered” light fixtures, we have created fixtures on larger and larger scales. We have been commissions to create pieces for industrial spaces, hotels and private spaces as well as customized portraits.

Technique and materials:

Sheets of white acrylic glass cut by laser, chrome coated spacers, LED light, 2.5 meter long cable including on\off switch.

All of the electrical components are UL compliant

HAHAVA WINGS

Layered illuminating piece based on elements photographed and sampled from around the farm gallery, the Holon industrial area and the nearby agricultural school. When the viewers stand in front of the work, they themselves become another layer in the work.



L 190 \ W 7 \ H 215 cm

For pricing & more info



LAYERED

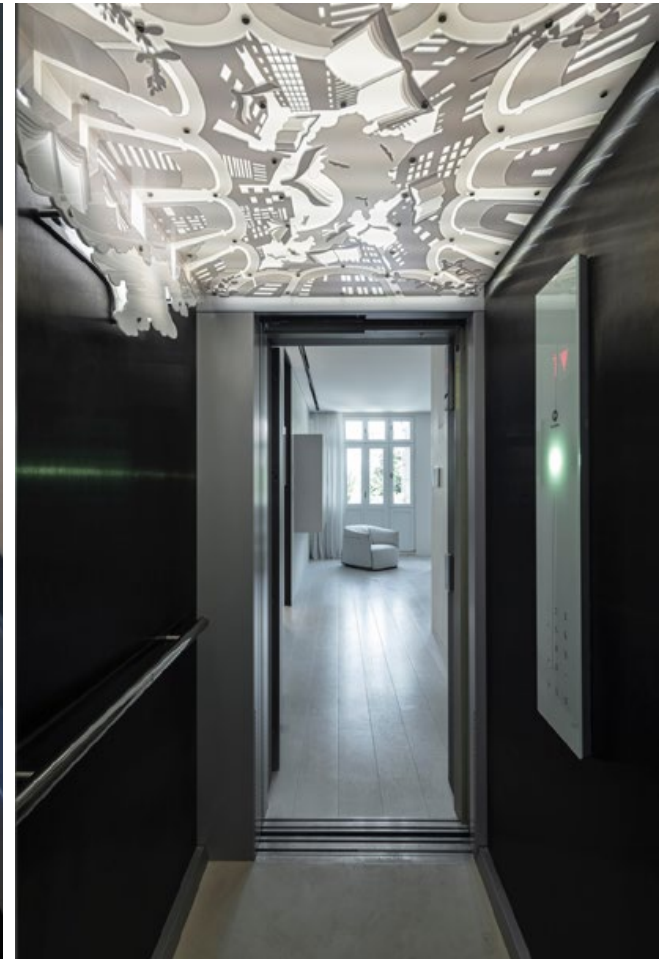


LAYERED

PRIVAT HOUSE ELEVATOR CEILING

Historical building designed by the architect Joseph Berlin in 1929 for his friend, the writer, editor and publisher, Yehoshua Hanna Ravnitsky. For the making process [click here](#).

Architectural renovation by Kimmel Eshkolot Architects | Lighting design by Orly Alkabes



L 130 \ W 125 \ H 35 cm

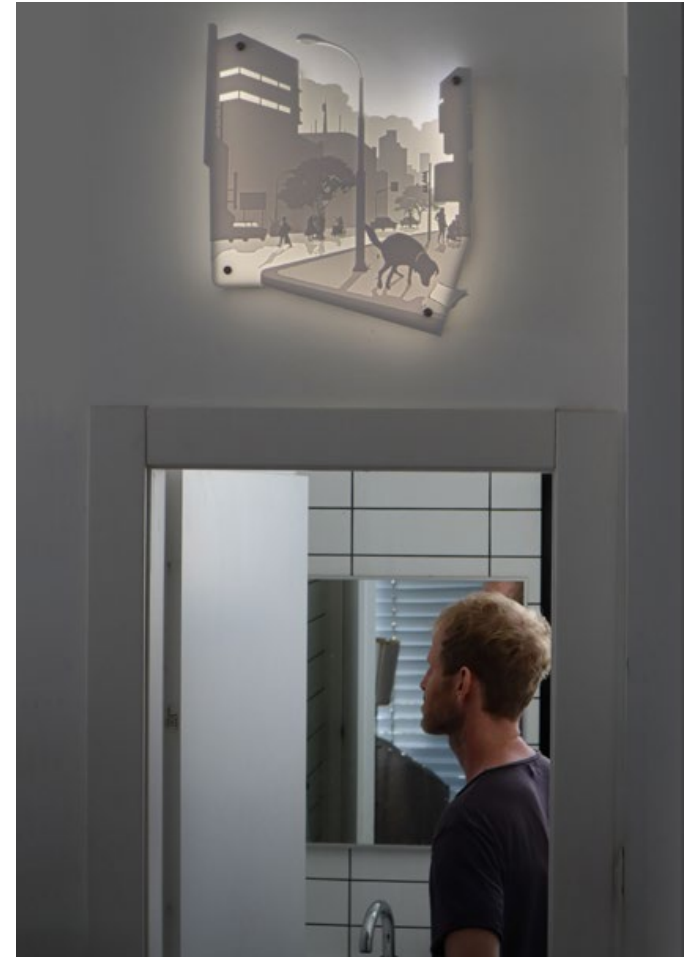
For pricing & more info



LAYERED

BEST TOILET SIGN EVER

Commissioned layered work for a beautiful penthouse apartment in the Levinsky market. The design brief was “an illuminated sign for the toilet with my dog pooping” :)



L 40 \ W 7 \ H 48 cm

LAYERED

For pricing & more info



RADIAL FOREST

On the left: residential space by Arik Ben Simhon, on the right: office space by Yulie Wallman



L 182 \ W 7 \ H 175 cm

LAYERED

For pricing & more info



RADIAL FOREST



At Arik Ben Simhon showroom, photo by Ori Akerman

For pricing & more info



LAYERED

ARCHED KIBBUTZ

Light piece conjuring a painting of a kibbutz landscape. It mellows the artistic debate, and takes us back in history to the Zionist ideal, when settlement in Israel was linked with the natural landscape and pioneering construction. The process of creating the piece in layers of Plexiglas returns us to the construction of the nation, for it too took place in 'layers' of geography and society.



L 185 \ W 7 \ H 110 cm

For pricing & more info



LAYERED

ARCH KIBBUTZ



L 185 \ W 7 \ H 110 cm

LAYERED

For pricing & more info



COMMISSIONED WEDDING GIFT

Made to order piece, designed as a wedding gift for a surfer couple, based on a photo.



L 66 \ W 7 \ H 46 cm

LAYERED

For pricing & more info



COMMISSIONED BIRTHDAY GIFT

Made to order piece, designed as a birthday gift for a diving couple, based on a sketch, photos and memories from the Maldivian reefs.



L 46 \ W 7 \ H 40 cm

LAYERED

For pricing & more info



BEFORE SUNRISE

We wake up before sunrise to the sounds of the Muezzin, as we do every morning, and set out to tour the Jaffa promenade on our bicycles. We stop on a hilltop in the Charles Clore Park to take a breath of air and look at the city as it gradually awakens. The soft autumn breeze and the early morning light illuminating Adi as she watches the city, became one memory of a magical moment that binds two together, nature and city.



L 110 \ W 7 \ H 35 cm

For pricing & more info



LAYERED

FIND ALICE

Life is a riddle with no answer, a dream of a sleeping king, a round running track with mice and queens, a chessboard, a poem. We give you things of light and beauty, of careful planning and precision. The material, the image, the story - they all must work together, like this piece which we are very proud of. Beyond these works there are hours of trying and failing unseen, and a big big love for what we do.



L 50 \ W 7 \ H 35 cm

LAYERED

For pricing & more info



DEEP IN THE WOODS

In my dream she walks in a forest, on a disappearing path. Curious and strong, she walks away from home and into the unknown. I follow her from afar, to protect my Little Red Riding Hood, to keep her safe. Bedtime stories become a dream that reminds us that our roots are planted in the wilderness. We must trust our instincts and the guiding light that shines behind all things.



L 45 \ W 7 \ H 33 cm

LAYERED

For pricing & more info



BLACK GOLD

It is not to be noticed on a catch of a glimpse, but this work juxtaposes a scene of serene view with a human made catastrophe. Only when the backlight shines through the layers and is blocked by the golden mirror, which turns black against it, is the whole story (disastrous oil spill) revealed.



L 55 \ W 7 \ H 55 cm

LAYERED

For pricing & more info



SHOW MUST GO ON

👁 In December, 2017, this piece was purchased by Quentin Tarantino

A portrait of the Israeli singer Sviká Pik,
Combination of plexiglass, silver mirror and LED light.



L 35 \ W 7 \ H 30 cm

LAYERED

For pricing & more info



LAYERED PORTRAIT

Dan Caspi | 1.12.1945 – 22.1.2017

Layered portrait for a conference room at the Ben-Gurion University.

Commissioned work for a conference room at the Ben-Gurion University.

Interior design by Michal Doron of Studio Gelbart.



L 70 \ W 7 \ H 80 cm

For pricing & more info



LAYERED

EXPERIMENT WITH VENEER

Combination of layered plexiglass, LED light
& various kinds of veneer.



L 30 \ W 30 \ H 50 cm



LAYERED

For pricing & more info





BRICOLAGE

Abandoned and forgotten objects that found
in warehouses, Jaffa streets and flea market
repurposed into new contexts and uses



ROMANO REFLECTION DEVICE

The adult perception is saturated with symbols and information. It is difficult to look with clear eyes and see the wonder in form or movement without linking to meaning. Those who recognize the guillotine will not be able to see here only an innocent mirror, but perhaps they can allow the shape, handle and seduction in motion to ease the weight of knowledge into one moment of play.



ROMANO REFLECTION DEVICE



ROMANO REFLECTION DEVICE



BRICOLAGE



BRICOLAGE

SEES & SOOS

Soos is a catch all phrase that can convey anything or nothing at all. Common uses include but are not limited to; substituting for about any other word, replacing pauses in sentences, annoying people by elongating the o's in Soos to a ludicrous extent, greeting a friend, responding to negative criticism, etc.

In Hebrew “soos” simply means “horse”.

[Click here to learn more about this product in our blog.](#)



L 73 \ W 28 \ H 56 cm

BRICOLAGE

For pricing & more info



SEES & SOOS



L 73 \ W 28 \ H 56 cm

BRICOLAGE

For pricing & more info





הנח
אלה

Studio Knob
משחקים ברצינות



L 160 \ W 50 \ H 120 cm

BRICOLAGE

For pricing & more info





L 160 \ W 50 \ H 120 cm

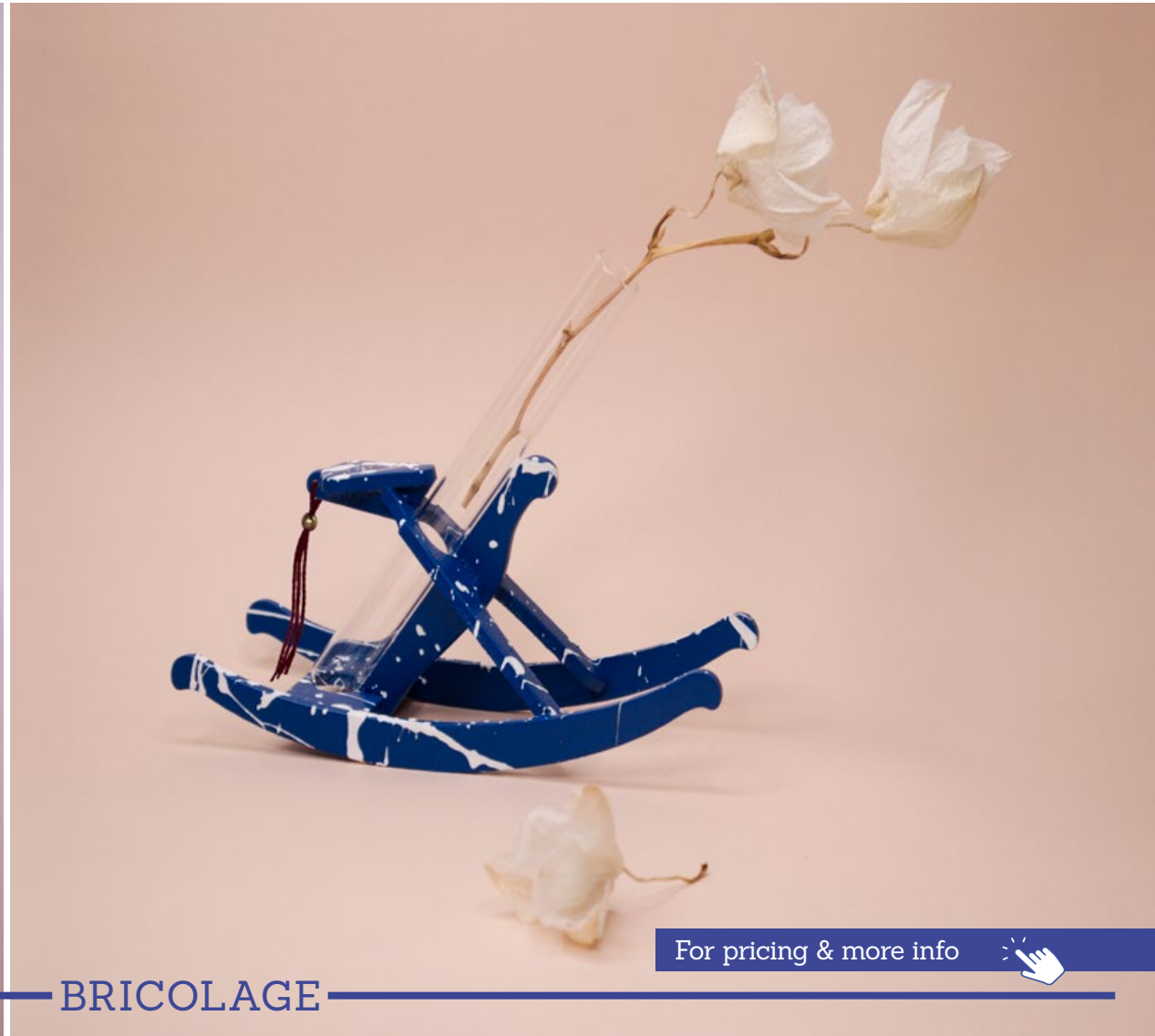
BRICOLAGE

For pricing & more info



FLOWER RIDER

The desktop and scaled-down versions of rocking horses offer a playful pastime for adults, providing an opportunity to reimagine the object and its surroundings in endless ways. Similarly, an empty test tube can be an invitation to play, to change something small in our everyday reality, and to ask the question - what else can become a rocking horse?





large: L 17\ W 6 \ H 13.5 cm

BRICOLAGE

For pricing & more info





BRICOLAGE

JAFFA CLOCKS

This wall clocks collection was crafted from reclaimed broken furniture legs that were discovered at the Jaffa Flea Market. These pieces were purposely designed with a “wabi-sabi” aesthetic, which embraces the imperfections and natural beauty of handcrafted items. Therefore, we decided to leave some of the cracks and other imperfections in the wood, which created a stunning contrast against the modern geometric coating we meticulously applied by hand.



L 7.5 \ W 3.5 \ H 43 \ 70 \ 73 cm

BRICOLAGE

For pricing & more info



JAFFA CLOCKS

Custom made according to a brand color.



MAMA, MAX & KAI

Mama, Max and Kai are hybrid creatures that combine furniture, musical instruments, a game and a sculpture. In combination with all these, they exist in their own parallel world, and expand the design lexicon of the studio into the realms of fantasy.





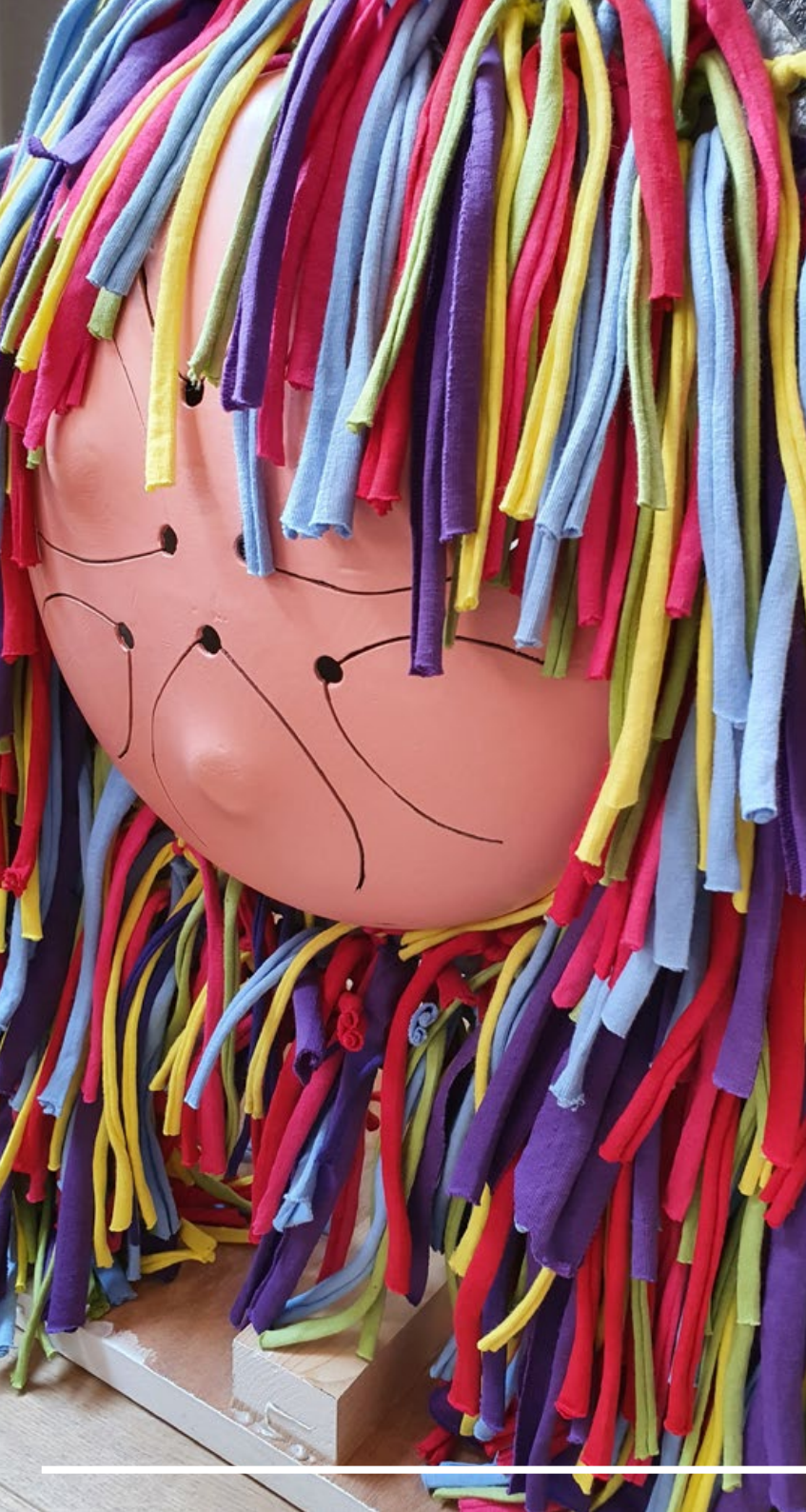
BRICOLAGE

COMMUNITY ART WORKSHOP AT ZUMU FESTIVAL

Zumu – a mobile, community-based museum that travels throughout Israel and presents changing exhibitions that are created and curated in collaboration with the local community.

Pair of miraculous creatures – seating and playing sculptural games. Hybrid creatures that combine a piece of furniture, a musical instrument, a game and a sculpture, that were created in a community-based art workshop with the neighborhood's children.





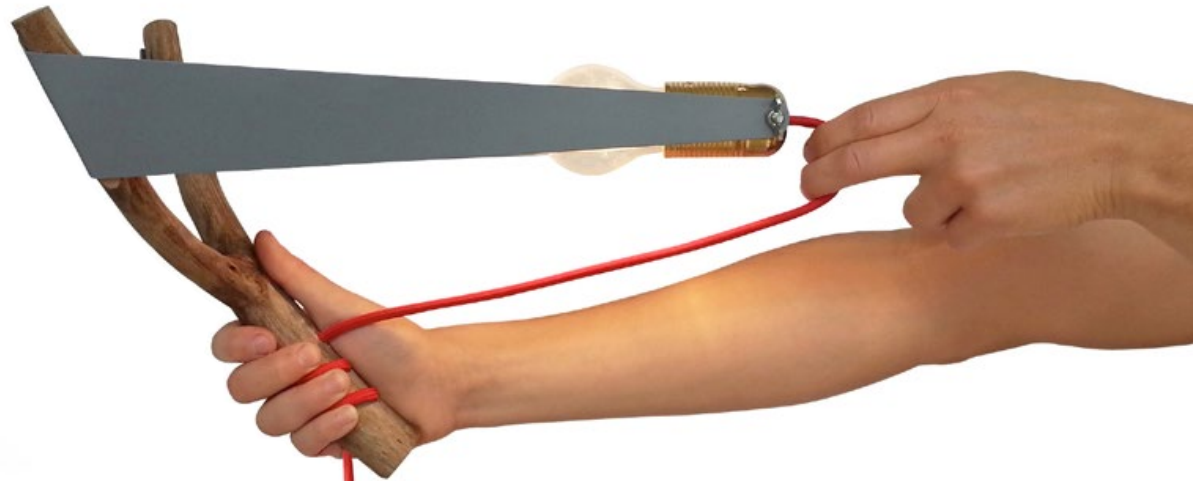
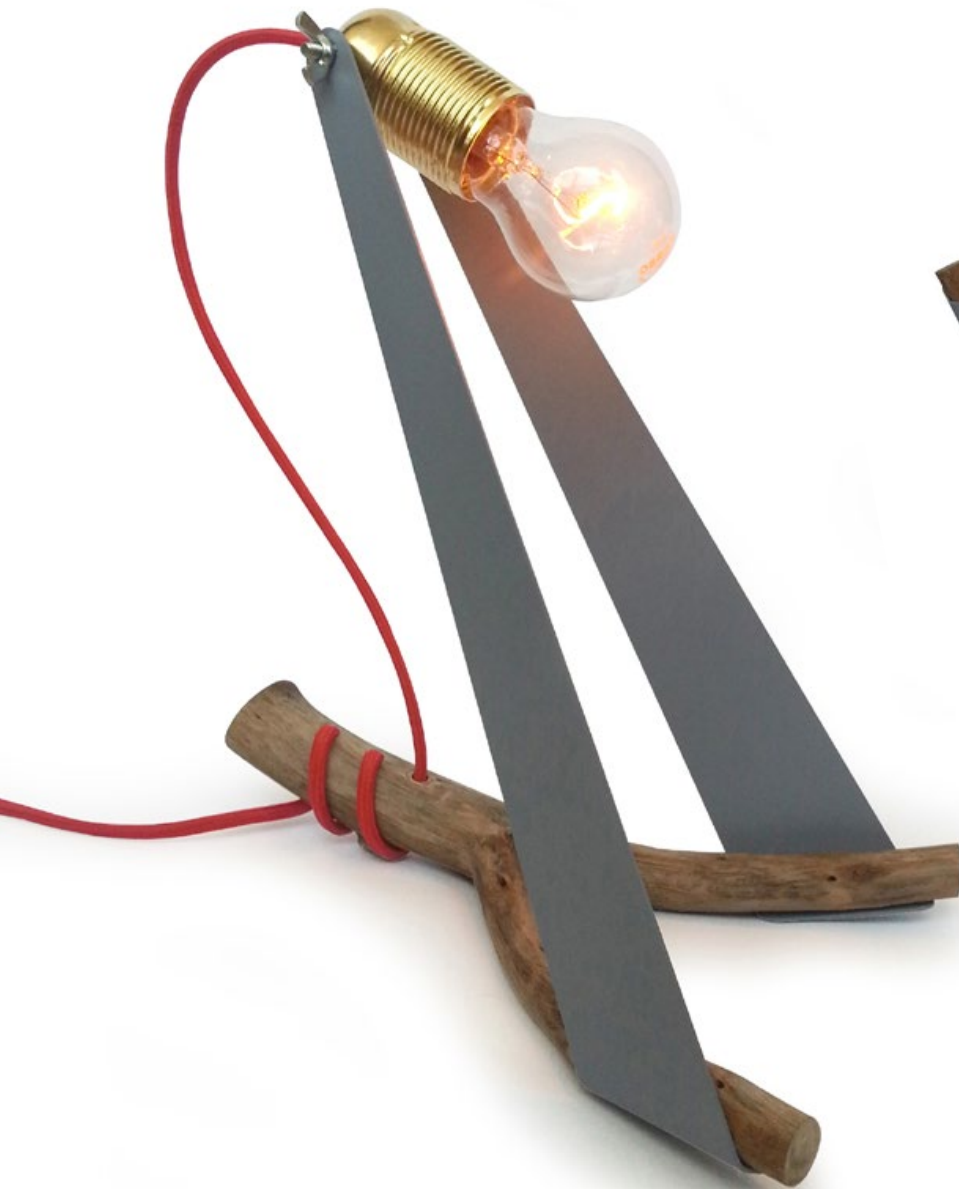


For pricing & more info



BRICOLAGE

SLINGSHOT LAMP



L 35 \ W 20 \ H 42 cm

BRICOLAGE

For pricing & more info



KEN LAMP

A pigeon built its nest in the lighting rails in the ceiling of our studio. From where we were sitting, it looked like the nest is producing the light from above. KEN (nest in Hebrew) is a light object that produces warm light. The electrical wiring complements the nest and blends with the natural structure of the branch. Collaboration with Gidi Gilam.



L 43 \ W 20 \ H 33 cm

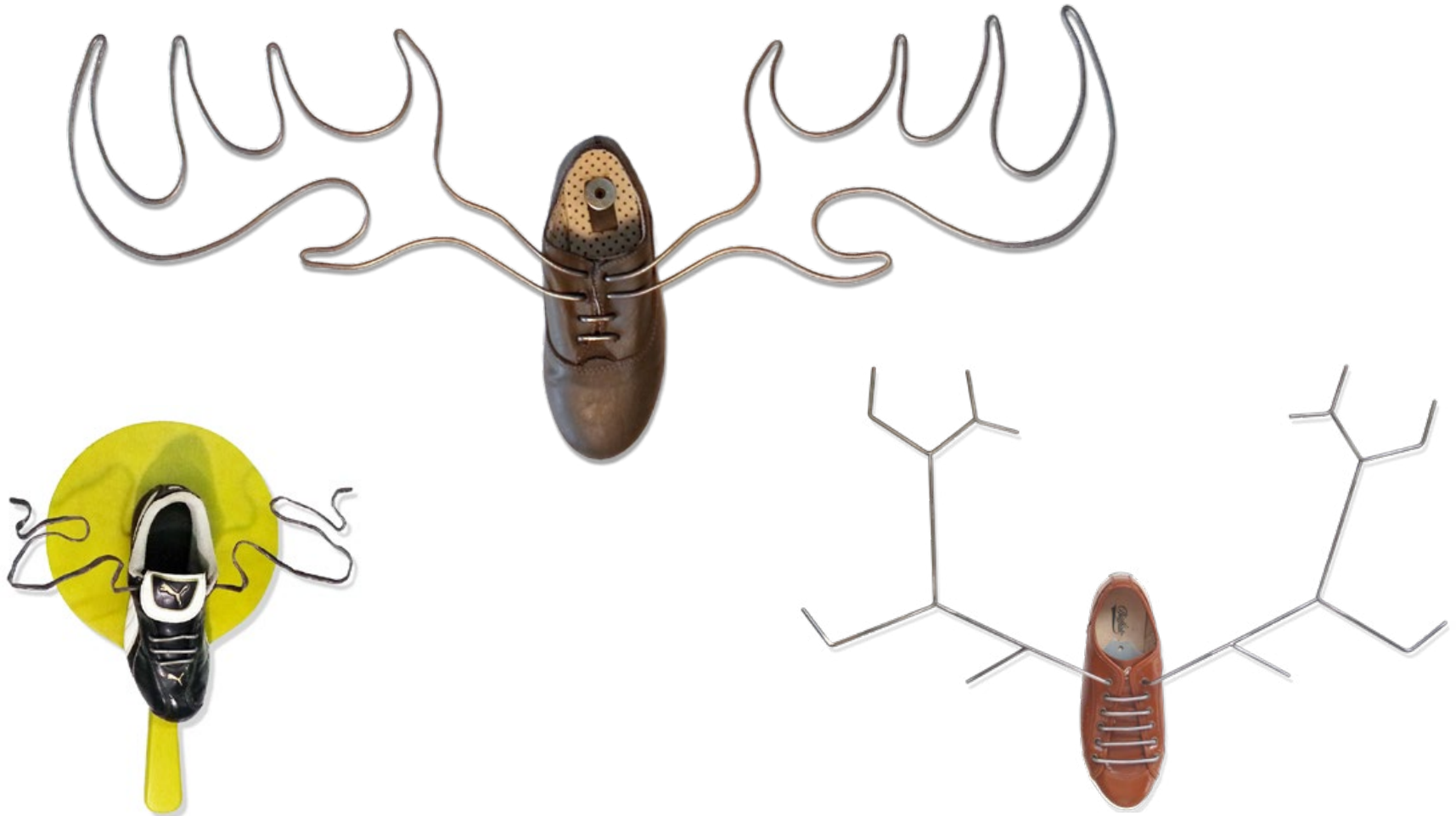
BRICOLAGE

For pricing & more info



SHOE TROPHY

An experiment with a series of assisted readymade repurposed into a coat rack, inspired by Picasso's "Bull's Head". This is an impulsive association game between the world of fashion, hunting, sports, trophies and taxidermy. Collaboration with Gidi Gilam.



L 52 \ W 12 \ H 25 cm

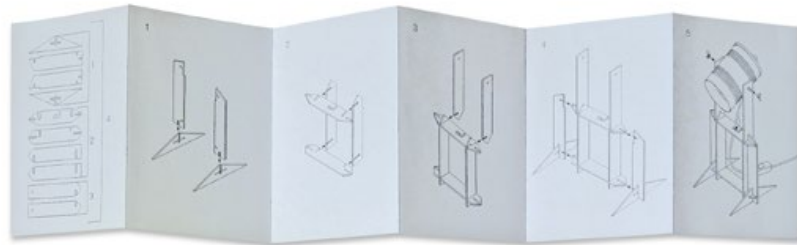
BRICOLAGE

For pricing & more info



DIY CAN LAMP

Self assembly kit



L 15 \ W 15 \ H 35 cm

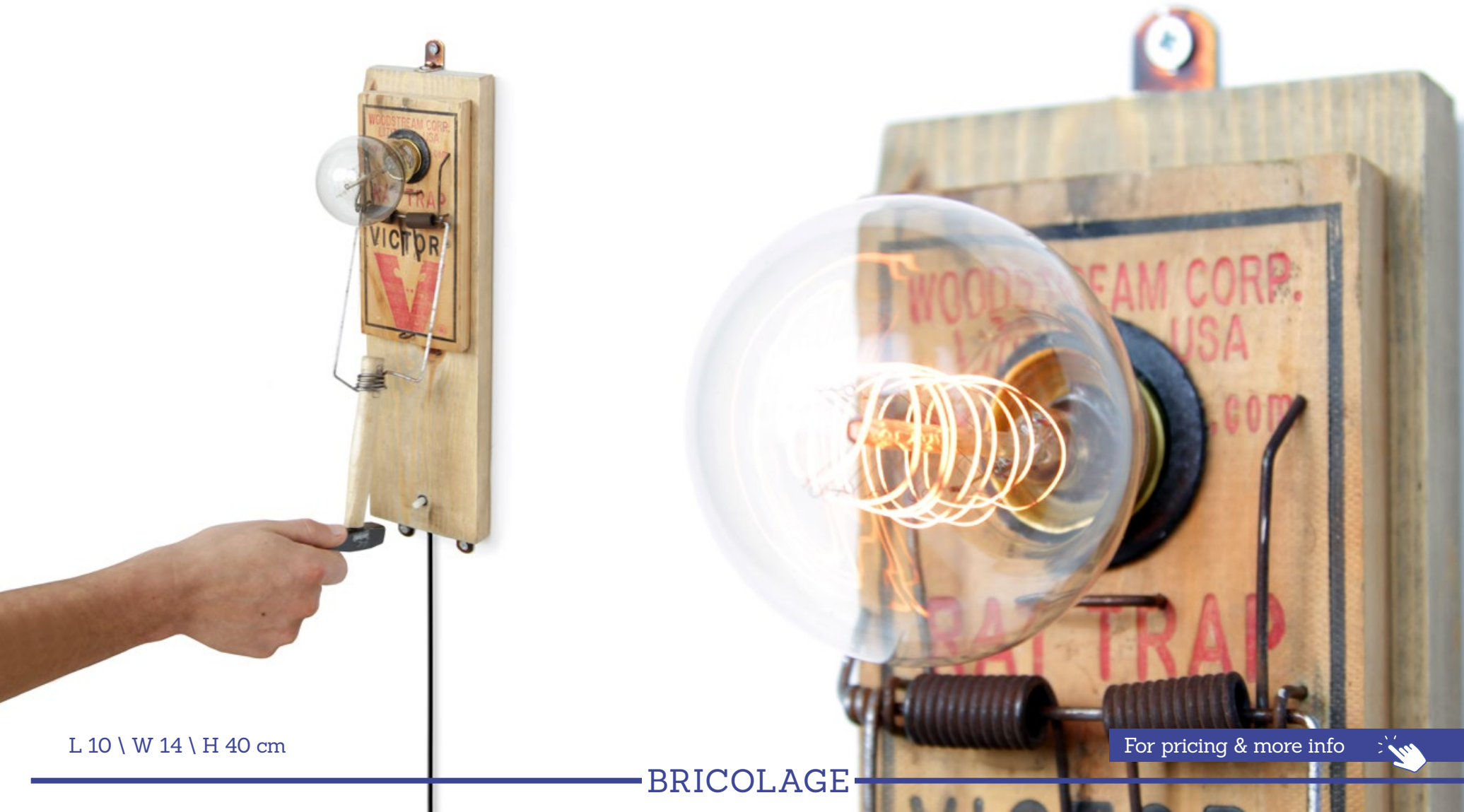
BRICOLAGE

For pricing & more info



RAT TRAP HAMMER LAMP

Inspired by practices of surrealism and dada art, we created this lamp from a rat trap we found and a spare hammer we had in our studio. By placing these unrelated objects together and the inability to settle their functionality with each other, allows the occurrence of new contexts and uses. Collaboration with Gidi Gilam.



L 10 \ W 14 \ H 40 cm

BRICOLAGE

For pricing & more info



KASTIHELL LAMP

Collaboration with Gidi Gilam

At Vicious Gallery, photo by Iko Franko.



L 40 \ W 40 \ H 70 cm

For pricing & more info



BRICOLAGE

MR. LAMP

Collaboration with Gidi Gilam



L 50 \ W 50 \ H 210 cm

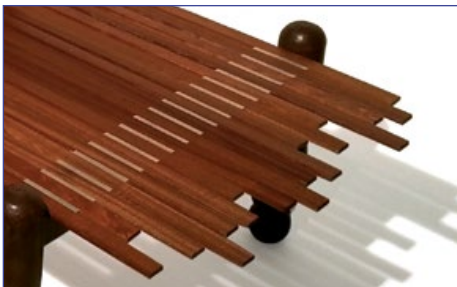
BRICOLAGE

For pricing & more info



TERRACE TABLE

We used old and broken furniture legs with the Domicile aluminium and wood structure to create a hybrid that preserves the quality and beauty of the old and the broken with the geometric cleanliness of the new product. Collaboration with Gidi Gilam.



L 180 \ W 60 \ H 40 cm

BRICOLAGE

For pricing & more info



VIVA LA FASHION!

Collaboration with Gidi Gilam



L 15 \ W 30 \ H 65 cm



BRICOLAGE

For pricing & more info



Q-BENCH CABINET

Collaboration with Gidi Gilam



L 55 \ W 40 \ H 55 cm

BRICOLAGE

For pricing & more info



For press, projects, blog and more visit our site:

